

New 9th Generation Slim Series

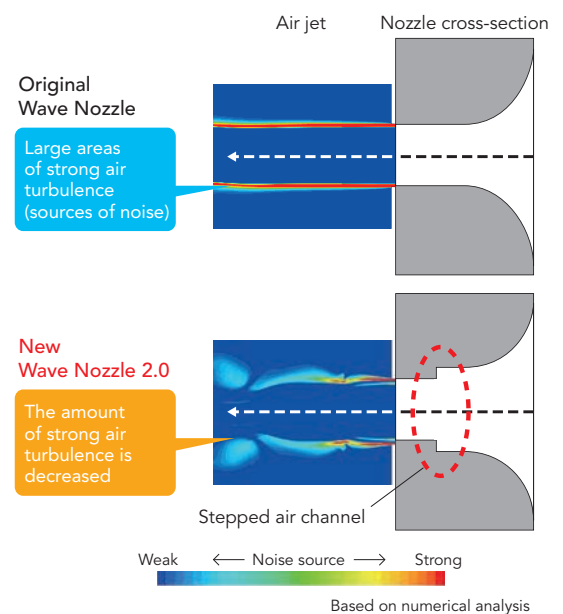
The latest evolution of the original dual-jet hand dryer

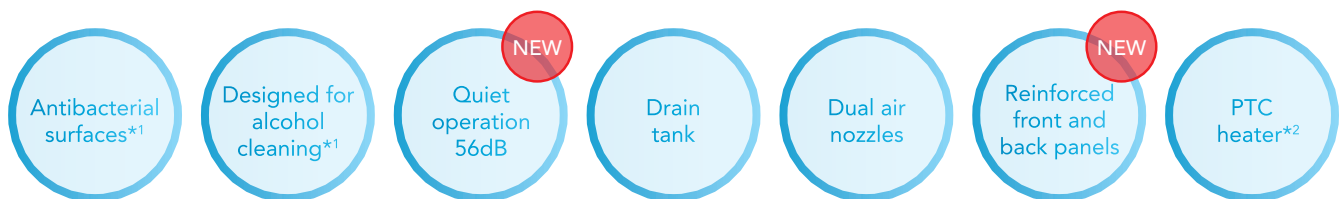


Ultra-quiet operation

New Wave Nozzle 2.0

The patented wave nozzle has been further improved. Developed from fluid control technology, sound-causing turbulence has been further decreased, achieving a large 2dB reduction in noise.





*1 Excluding front panel of JT-SB216JSH2-S-NE

*2 Available for JT-SB216JSH2

Comfortable to use

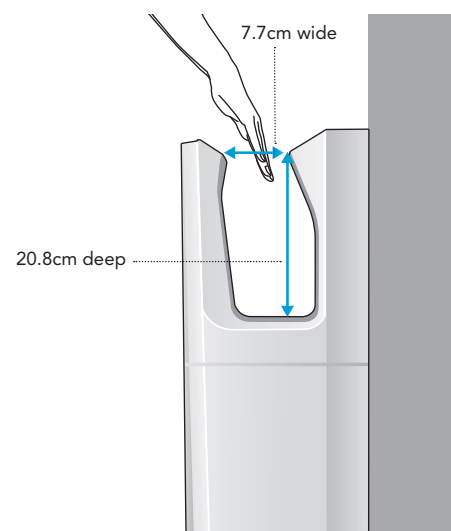
Large 6.8L Drying Area

The space to insert hands is a wide 7.7cm at the narrowest point and 20.8cm deep. The large drying area makes it easier to dry hands without accidentally touching the unit.

Child-friendly Design

Alternate child sensors are placed inside of the drying area to detect small hands entering from the sides.

■ Open-side design



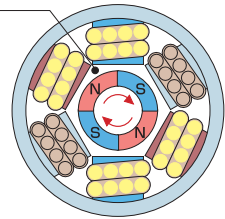
Long-lasting reliability

High-efficiency Brushless DC Motor

This high-precision motor is completely developed and manufactured entirely by Mitsubishi Electric. In-house testing results show a motor life of over seven years of use (400 uses per day).

■Brushless DC Motor

Contact-free rotor eliminates wear and tear.



Reinforced Protective Panels

Newly designed front and back panels make the new Jet Towel Slim more robust and impact-resistant. The panels have been tested to withstand an impact of up to 15J, or the equivalent of dropping a 1kg steel ball from a height of approximately 1.5 meters.

Simplified maintenance

0.8L Drain Tank Keeps Floors Dry

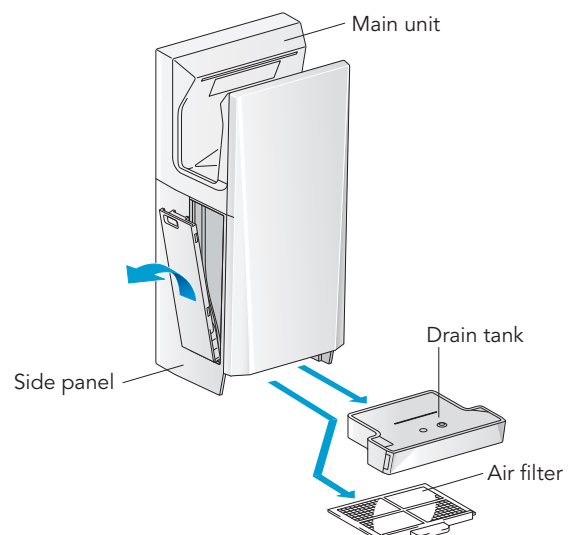
Water blown from hands is caught and channeled into a convenient drain tank for easy removal. It stores up to approximately 800 uses (0.8L), and requires only periodic emptying and quick rinsing. In the 9th-generation model, the drain tank is the same color as the body, making it less conspicuous to prevent tampering.



A small window indicates the level of water collected.

Easy Access Air Filter and Drain Duct

The washable air filter and drain duct are easily accessible, making quick and thorough cleaning possible. No tools or time-consuming disassembly required.



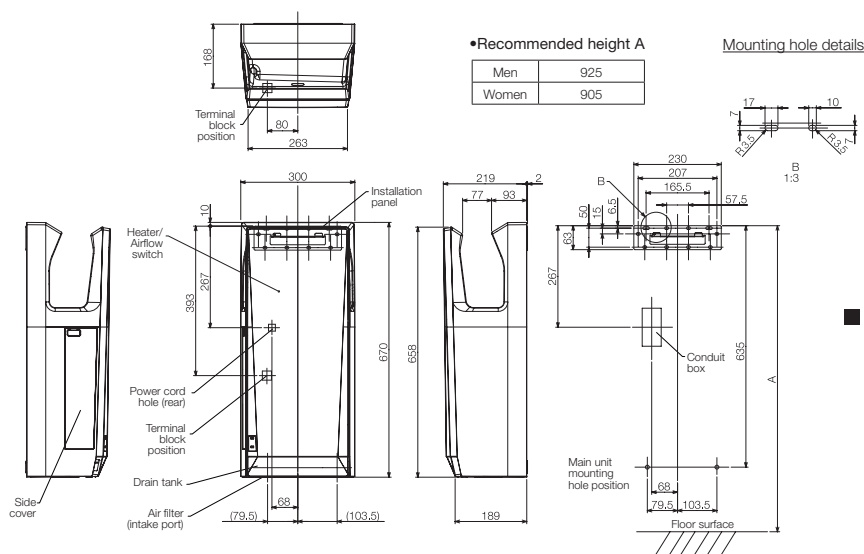
Specifications

	Power supply	Mode	Heater	Drying time* ¹ (sec)	Power consumption(W)	Noise* ² (dB)	Motor type	Hygienic features	External dimensions (mm)	Weight (kg)	Drain tank (L)
Jet Towel Slim JT-SB216JSH2	220-240V 50-60Hz	High	ON	9-11	1240	59	Brushless DC	- Antibacterial surfaces - NSF certification - Alcohol-cleanable	Width: 300 Depth: 219 Height: 670	11	0.8
			OFF	11-13	720						
		Standard	ON	11-13	1070	56					
			OFF	13-15	550						
Jet Towel Slim JT-SB216KSN2		High	—	11-13	720	59					
				Standard	13-15	550					

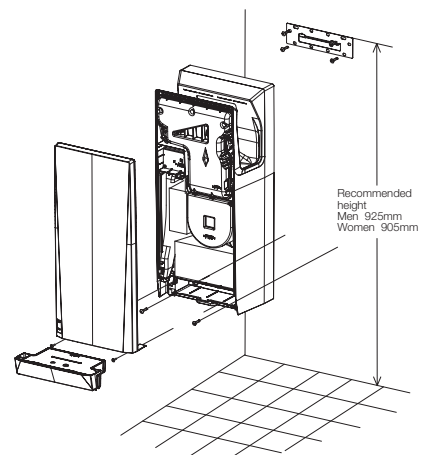
*1 Time needed to reduce remaining water to 50mg or less per hand (in-house study).

*2 Measurements made in anechoic chamber at a distance of 2m.

■ Dimensions



■ Mounting Diagram



- For fastening main unit mounting screws, use a Phillips(+) screwdriver with a shaft length of at least 150mm.
- Mount the unit so that the left-side cover is removable and the rating label is visible. (At least 150mm, but 200mm or more is recommended. Embedded portion is excluded.) Allow 200mm or more to enable the water drainage duct to be checked after cleaning.
- Allow at least 130mm between the bottom surface (air-intake port) of the unit and the floor surface.

(Unit: mm)