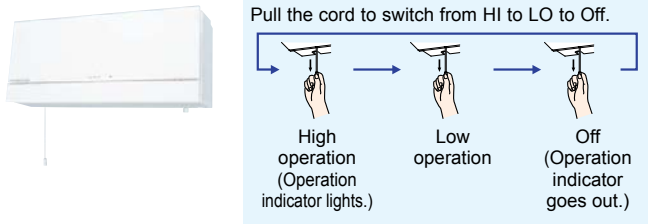


# VL-100 (E) U<sub>5</sub>-E

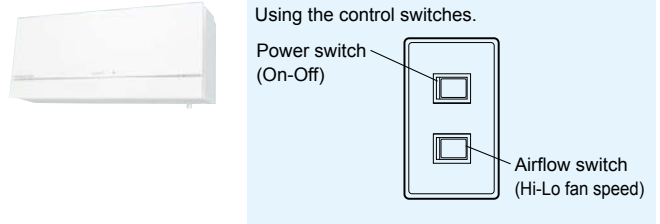


# Stylish Design

## VL-100U<sub>5</sub>-E <Pulling switch model>



## VL-100EU<sub>5</sub>-E <Wall switch model>



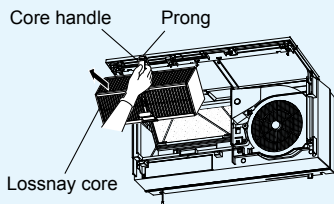
# Simple Installation

Easy installation through boring of 2 installation holes. All of the parts needed for installation is including the carton box of the products.

# Easy Maintenance

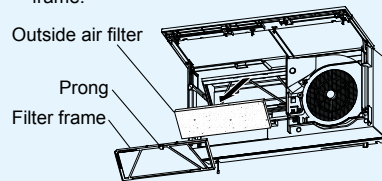
## 1. Remove the Lossnay core

Press the prong of the Lossnay core's handle and pull the handle toward you to remove the core.



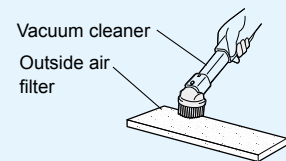
## 2. Remove the Filters

- 1) Pressing on the filter frame prong, pull the filter toward you to remove the filter frame from the main unit.
- 2) Remove the outside air filter from its filter frame.



## 3. Cleaning

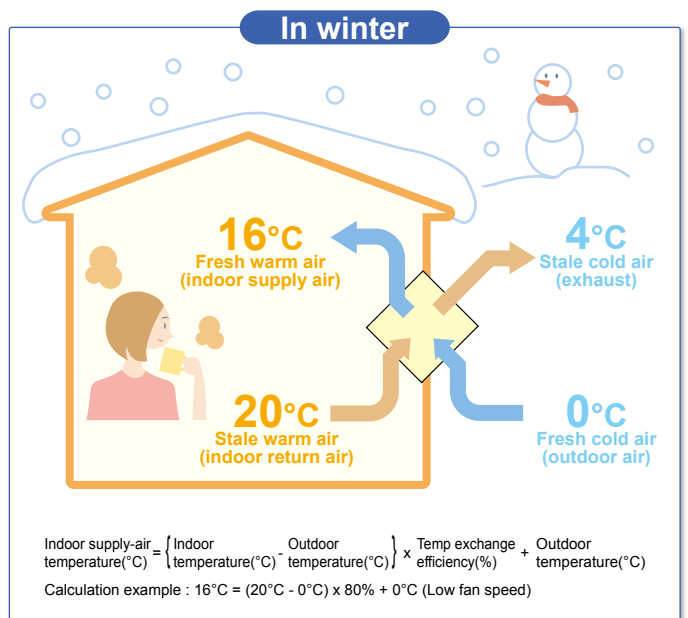
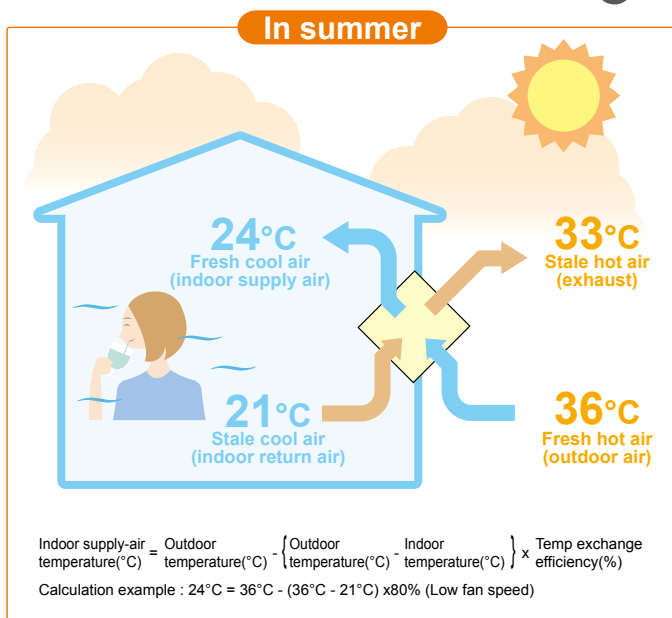
Vacuum the dust from the filter, and then handwash it in water with a neutral detergent or in lukewarm water (up to 40°C). Then dry it thoroughly to remove moisture.



# Low Noise Design

By providing a range of air volume for each fan speed, sound levels can be reduced to achieve low noise. (Less than 30dB at low fan speed)

# Total Heat Exchnage

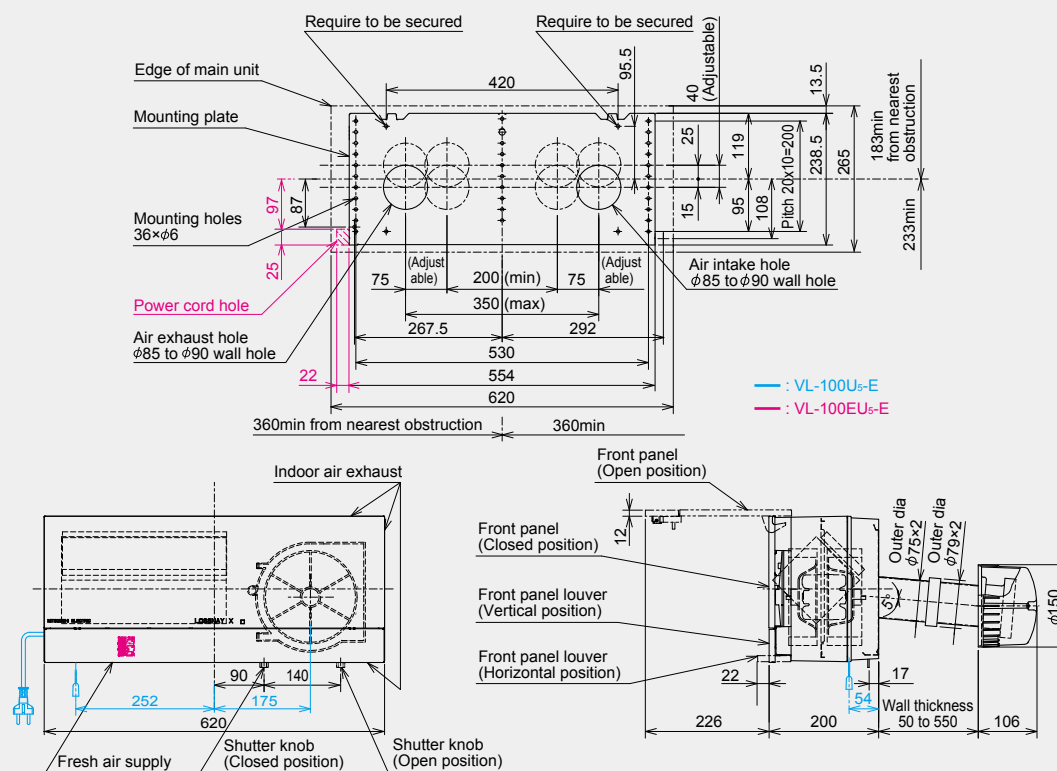


MODEL

# VL-100 (E) U<sub>5</sub>-E

Model	VL-100(E)U <sub>5</sub> -E							
Electrical power supply	220V/50Hz		230V/50Hz		240V/50Hz		220V/60Hz	
Fan speed	High	Low	High	Low	High	Low	High	Low
Air volume (m <sup>3</sup> /h)	100	55	105	60	106	61	103	57
Power consumption (W)	30	13	31	15	34	17	34	17
Temperature exchange efficiency (%)	73	80	73	80	72	79	73	80
Noise (dB)	36.5	24	37	25	38	27	38	25
Weight (kg)	7.5							
Specific energy consumption class	B							

## Dimensions



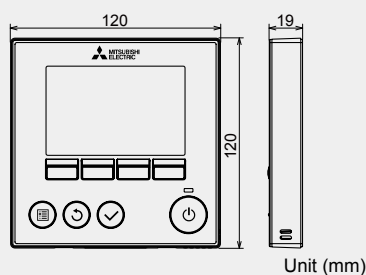
Unit (mm)



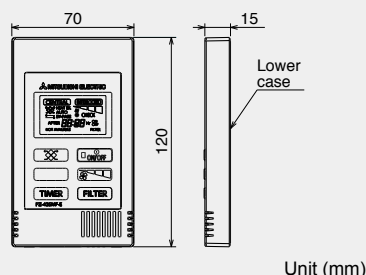
# Optional Parts List

## Remote controller

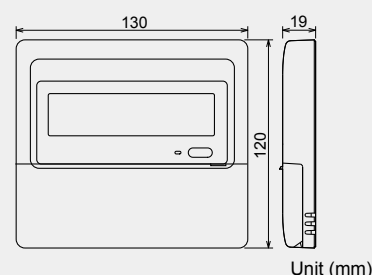
PZ-61DR-E



PZ-43SMF-E



PZ-60DR-E

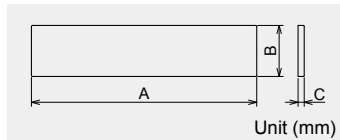


Function (Communicating Mode)	PZ-61DR-E		PZ-43SMF-E			PZ-60DR-E
	LGH-RVX/RVXT	VL-220CZGV-E	LGH-RVX/RVXT	LGF-100GX-E	VL-220CZGV-E	LGF-100GX-E
Fanspeed selection	4 fan speeds	4 fan speeds	2 of 4 fan speeds	2 of 3 fan speeds	2 of 4 fan speeds	2 of 3 fan speeds
Ventilation mode selection	Energy recovery / Bypass / Auto	Heat recovery / Bypass / Auto (available with optional parts P-133DUE-E)	Energy recovery / Bypass / Auto	Energy recovery / Bypass / Auto	Heat recovery / Bypass / Auto (available with optional parts P-133DUE-E)	Energy recovery / Bypass / Auto
Night-purge (time)	Anytime schedule	No	No	No	No	Yes (1:00 am start - 6:00 am end)
Night-purge (fan speed)	Selecttable from 4 fan speeds	No	No	No	No	Same as last operation
Function setting from RC	Yes	Yes	No	No	No	Yes
Bypass temp. free setting	Yes	Yes (available with optional parts P-133DUE-E)	No	No	No	No
Heater-On temp. free setting	Yes	No	No	No	No	No
Fan power change after installation	Yes	Yes	No	No	No	No
On/Off timer	Yes	Yes	Yes	Yes	Yes	Yes
Auto-Off timer	Yes	Yes	No	No	No	Yes
Weekly timer	Yes	Yes	No	No	No	Yes
Operation restrictions (On/Off, ventilation mode, fan speed)	Yes	Yes (ventilation mode is available with optional parts P-133DUE-E)	No	No	No	Yes
Operation restrictions (fan speed skip setting)	Yes	Yes	No	No	No	No
Screen contrast adjustment	Yes	Yes	No	No	No	No
Language selection	Yes (8 languages)	Yes (8 languages)	No (English Only)	No (English Only)	No (English Only)	Yes (8 languages)
Initializing remote controller	Yes	Yes	No	No	No	Yes
Filter cleaning sign	Yes	Yes	Yes	Yes	Yes	Yes
Lossnay core cleaning sign	Yes	No	No	No	No	Yes
Error indication	Yes	Yes	Yes	Yes	Yes	Yes
Error history	Yes	Yes	No	No	No	Yes

## Optional Parts for LGH and LGF type

### Standard filter

Replacement components for the standard air filter supplied with the Lossnay LGH main unit.

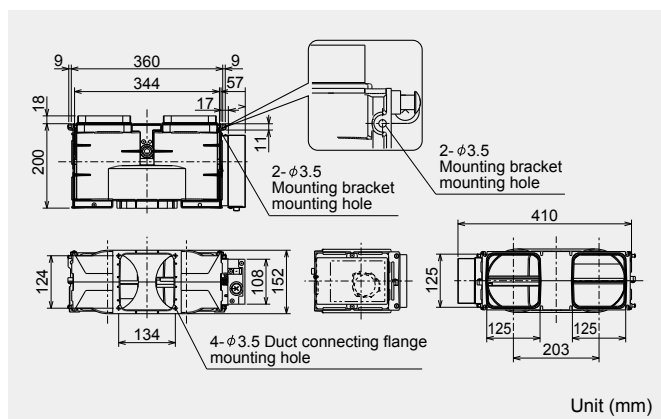


Model	Dimension (mm)			Number of filters per set		Applicable model	Filter material
	A	B	C				
PZ-15RF <sub>8</sub> -E	557	130	20	1	1	LGH-15RVX-E	Nonwoven filter Filtration efficiency (EU-G3)
PZ-25RF <sub>8</sub> -E	333	156	15	2	2	LGH-25RVX-E	
PZ-35RF <sub>8</sub> -E	399	183	20	2	2	LGH-35RVX-E	
PZ-50RF <sub>8</sub> -E	470	183	15	2	2	LGH-50RVX-E GUF-50RD(H)4	
PZ-65RF <sub>8</sub> -E	433	218	15	2	2	LGH-65RVX-E	
PZ-80RF <sub>8</sub> -E	451	243	15	2	2	LGH-80RVX-E LGH-150RVX-E(2sets)	
PZ-100RF <sub>8</sub> -E	565	243	15	2	2	LGH-100RVX-E GUF-100RD(H)4 LGH-200RVX-E(2sets)	

Model	Air	Dimension (mm)		Number of filters per set	Applicable model	Filter material
		A	B			
PZ-150RTF-E	Supply	655	290	2	LGH-150RVXT-E	Nonwoven filter Filtration efficiency (EU-G3)
	Exhaust	655	250	2		
PZ-250RTF-E	Supply	985	290	2	LGH-200RVXT-E	
	Exhaust	985	250	2	LGH-250RVXT-E	

## Optional Parts for VL-220CZGV-E

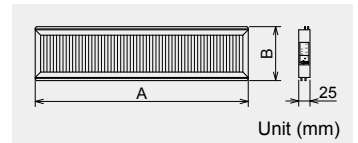
### Bypass damper



Filter type	High Efficiency Supply Air filter	Medium Efficiency Exhaust Air Filter	Standard Replacement Filter
Model	P-220SHF-E	P-220EMF-E	P-220F-E
Classification (EN779:2012)	M6	G4	G3
Approximate Service Life	1 year (replacement) Cannot be cleaned	2 year (replacement) Clean approximately once every 6 months	Replace when broken Can be washed with water and reused 4 times. Clean approximately once every 6 months.

### High-efficiency filter

This high-efficiency filter (with 65% colorimetricity EU-F7:EN779:2002) can be incorporated inside the Lossnay unit without the need to attach parts from other systems, as done to date.

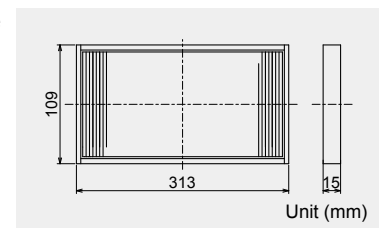


Model	Dimension (mm)		Number of filters per set	Applicable model	Filter material
	A	B			
PZ-15RFM-E	553	123	1	LGH-15RVX-E	Noncombustible fiber (polyester polyolefin) (EU-F7:EN779:2002)
PZ-25RFM-E	327	149	2	LGH-25RVX-E	
PZ-35RFM-E	393	175	2	LGH-35RVX-E	
PZ-50RFM-E	464	175	2	LGH-50RVX-E GUF-50RD(H)4	
PZ-65RFM-E	427	209	2	LGH-65RVX-E	
PZ-80RFM-E	446	236	2	LGH-80RVX-E LGH-150RVX-E(2sets)	
PZ-100RFM-E	559	236	2	LGH-100RVX-E GUF-100RD(H)4 LGH-200RVX-E(2sets)	

## Optional Parts for VL-100(E)U<sub>5</sub>-E

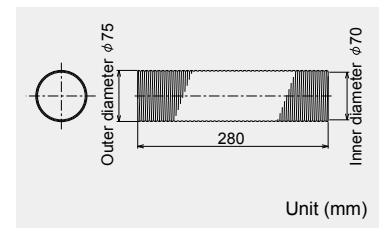
### High performance filter P-100HF<sub>5</sub>-E

Upgraded high-performance filter.



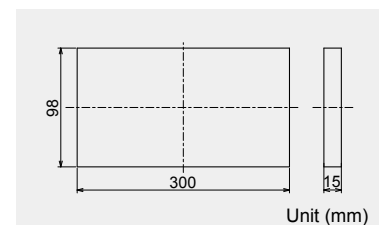
### Extension pipe P-100P-E

Total length when connected to the pipe extension coupling is 300mm.



### Replacement filter P-100F<sub>5</sub>-E

Standard grade replacement filter.



### Extension pipe coupling P-100PJ-E

Screw-in method

