

PEAD SERIES

R32
R410A



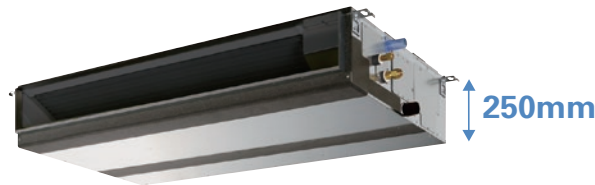
PEAD-M35/50/60/71/100/125/140JA(L)



The thin, ceiling-concealed indoor units of this series are the perfect answer for the air conditioning needs of buildings with minimum ceiling installation space and wide-ranging external static pressure. Energy-saving efficiency has been improved, reducing electricity consumption and contributing to a further reduction in operating cost.

Compact Indoor Units

The height of the models from 35–140 has been unified to 250mm, which makes installation in low ceilings with minimal clearance space possible.



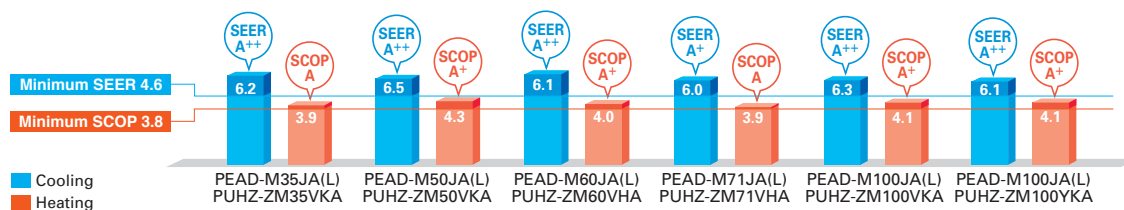
PEAD-M JA(L)

External Static Pressure

External static pressure conversion can be set up to five stages. Capable of being set to a maximum of 150Pa, units are applicable to a wide range of building types.

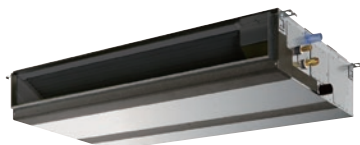
ErP Lot 10-compliant, Achieving High Energy Efficiency of SEER/SCOP Rank A+ and A++

A direct-current (DC) fan motor is installed in the indoor unit, increasing the seasonal energy efficiency of the newly designed Power Inverter Series (PUHZ-ZRP) and resulting in compliance of the full-capacity models with ErP Lot 10 and energy rankings of A+/A++ for cooling and A/A+ for heating. This contributes to an impressive reduction in the cost of annual electricity.

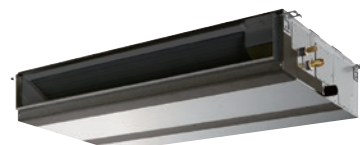


Drain Pump Option Available with All Models

The line-up consists of two types, models with or without a built-in drain pump.



PEAD-M JA → Drain pump built-in



PEAD-M JAL → No drain pump

* Units with an "L" included at the end of the model name are not equipped with a drain pump.

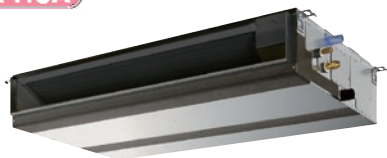
SERIES SELECTION

Power Inverter Series



Indoor Unit

R32
R410A



PEAD-M35/50/60/71/100/125/140

Outdoor Unit

R32

For Single



PUZ-ZM35/50 PUZ-ZM60/71 PUZ-ZM100/125/140

R32

For Multi
(Twin/Triple/Quadruple)



PUZ-ZM71 PUZ-ZM100/125/140/200/250

Remote Controller



Optional



Optional



Optional



Optional

PEAD-M JA Indoor Unit Combinations Indoor unit combinations shown below are possible.

Indoor Unit Combination	Outdoor Unit Capacity																			
	For Single								For Twin				For Triple			For Quadruple				
	35	50	60	71	100	125	140	200	250	71	100	125	140	200	250	140	200	250	200	250
Power Inverter (PUHZ-ZRP)	35x1	50x1	60x1	71x1	100x1	125x1	140x1	-	-	35x2	50x2	60x2	71x2	100x2	125x2	50x3	60x3	71x3	50x4	60x4
Distribution Pipe	-	-	-	-	-	-	-	-	-	MSDD-50TR2-E				MSDD-50WR2-E		MSDT-111R3-E			MSDF-111R2-E	

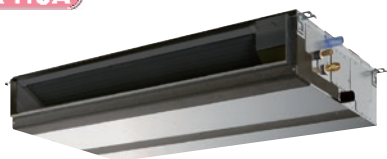
SERIES SELECTION

Standard Inverter Series



Indoor Unit

R32
R410A

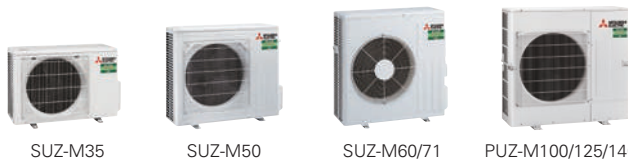


PEAD-M35/50/60/71/100/125/140

Outdoor Unit

R32

For Single



SUZ-M35 SUZ-M50 SUZ-M60/71 PUZ-M100/125/140

R32

For Multi
(Twin/Triple/Quadruple)



PUZ-M100/125/140 PUZ-M200/250

Remote Controller



Optional



Optional



Optional



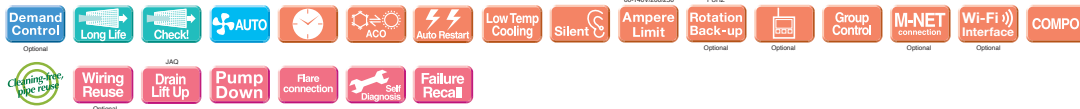
Optional

PEAD-M JA Indoor Unit Combinations Indoor unit combinations shown below are possible.

Indoor Unit Combination	Outdoor Unit Capacity																			
	For Single								For Twin				For Triple			For Quadruple				
	35	50	60	71	100	125	140	200	250	71	100	125	140	200	250	140	200	250	200	250
Standard Inverter (PUHZ-P&SUZ)	35x1	50x1	60x1	71x1	100x1	125x1	140x1	-	-	-	50x2	60x2	71x2	100x2	125x2	50x3	60x3	71x3	50x4	60x4
Distribution Pipe	-	-	-	-	-	-	-	-	-	MSDD-50TR2-E				MSDD-50WR2-E		MSDT-111R3-E			MSDF-111R2-E	

PEAD-M SERIES

POWER INVERTER

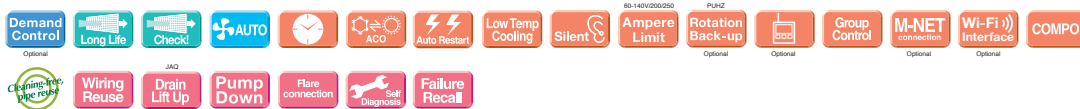


Type	Inverter Heat Pump											
Indoor Unit	PEAD-M35JA(L)	PEAD-M50JA(L)	PEAD-M60JA(L)	PEAD-M71JA(L)	PEAD-M100JA(L)	PEAD-M125JA(L)	PEAD-M140JA(L)	PEAD-M100YA(L)	PEAD-M125YA(L)	PEAD-M140YA(L)		
Outdoor Unit	PUZ-ZM35VKA	PUZ-ZM50VKA	PUZ-ZM60VKA	PUZ-ZM71VKA	PUZ-ZM100VKA	PUZ-ZM125VKA	PUZ-ZM140VKA	PUZ-ZM100YKA	PUZ-ZM125YKA	PUZ-ZM140YKA		
Refrigerant	R32*											
Power Supply	Source	Outdoor power supply										
Cooling	Capacity	Rated	kW									
		Min - Max	kW									
	Total Input	Rated	kW									
	EER**	Rated	kW									
	EEL Rank											
	Design Load	Rated	kW									
	Annual Electricity Consumption**	Rated	kWh/a									
	SEER**	Rated	kW									
	Energy Efficiency Class											
Heating	Capacity	Rated	kW									
		Min - Max	kW									
	Total Input	Rated	kW									
	COP**	Rated	kW									
	EEL Rank											
	Design Load	Rated	kW									
	Declared Capacity	at reference design temperature	kW									
		at bivalent temperature	kW									
		at operation limit temperature	kW									
	Back Up Heating Capacity		kW									
	Annual Electricity Consumption**	Rated	kWh/a									
	SCOP**	Rated	kW									
	Energy Efficiency Class											
Operating Current (max)	Input (Cooling / Heating)	Rated	A									
Indoor Unit	Operating Current (max)	Rated	A									
	Dimensions <Panel>	H x W x D	mm									
	Weight <Panel>		kg									
	Air Volume [Lo-Mid-Hi]		m ³ /min									
	External Static Pressure		Pa									
	Sound Level (SPL) [Lo-Mid-Hi]		dB(A)									
	Sound Level (PWL)		dB(A)									
Outdoor Unit	Dimensions	H x W x D	mm									
	Weight		kg									
	Air Volume		m ³ /min									
			m ³ /min									
	Sound Level (SPL)		dB(A)									
			dB(A)									
	Sound Level (PWL)		dB(A)									
			dB(A)									
	Operating Current (max)		A									
	Breaker Size		A									
Ext. Piping	Diameter	Liquid / Gas	mm									
	Max. Length	Out-In	m									
	Max. Height	Out-In	m									
Guaranteed Operating Range [Outdoor]	Cooling**	°C	°C									
	Heating	°C	°C									

*1 Refrigerant leakage contributes to climate change. Refrigerant with lower global warming potential (GWP) would contribute less to global warming than a refrigerant with higher GWP, if leaked to the atmosphere. This appliance contains a refrigerant fluid with a GWP equal to 550. This means that if 1 kg of this refrigerant fluid would be leaked to the atmosphere, the impact on global warming would be 550 times higher than 1 kg of CO₂, over a period of 100 years. Never try to interfere with the refrigerant circuit yourself or disassemble the product yourself and always ask a professional. The GWP of R32 is 675 in the IPCC 4th Assessment Report.
 *2 Energy consumption based on standard test results. Actual energy consumption will depend on how the appliance is used and where it is located.
 *3 Optional air protection guide is required where ambient temperature is lower than -5°C. *4 EER/COP and SEER/SCOP for M35-71 are measured at ESP 35Pa, for M100 at ESP 37Pa, for M125/140 at ESP 50Pa.
 *5 SEER and SCOP are based on 2009/125/EC: Energy-related Products Directive and Regulation (EU) No206/2012.

PEAD-M SERIES

STANDARD INVERTER



Type	Inverter Heat Pump											
Indoor Unit	PEAD-M35JA(L)	PEAD-M50JA(L)	PEAD-M60JA(L)	PEAD-M71JA(L)	PEAD-M100JA(L)	PEAD-M125JA(L)	PEAD-M140JA(L)	PEAD-M100YA(L)	PEAD-M125YA(L)	PEAD-M140YA(L)		
Outdoor Unit	SUZ-M35VA	SUZ-M50VA	SUZ-M60VA	SUZ-M71VA	PUZ-M100VKA	PUZ-M100YKA	PUZ-M125VKA	PUZ-M125YKA	PUZ-M140VKA	PUZ-M140YKA		
Refrigerant	R32*											
Power Supply	Source	Outdoor power supply										
Cooling	Capacity	Rated	kW									
		Min - Max	kW									
	Total Input	Rated	kW									
	EER**	Rated	kW									
	EEL Rank											
	Design Load	Rated	kW									
	Annual Electricity Consumption**	Rated	kWh/a									
	SEER**	Rated	kW									
	Energy Efficiency Class											
Heating	Capacity	Rated	kW									
		Min - Max	kW									
	Total Input	Rated	kW									
	COP**	Rated	kW									
	EEL Rank											
	Design Load	Rated	kW									
	Declared Capacity	at reference design temperature	kW									
		at bivalent temperature	kW									
		at operation limit temperature	kW									
	Back Up Heating Capacity		kW									
	Annual Electricity Consumption**	Rated	kWh/a									
	SCOP**	Rated	kW									
	Energy Efficiency Class											
Operating Current (max)	Input (Cooling / Heating)	Rated	A									
Indoor Unit	Operating Current (max)	Rated	A									
	Dimensions <Panel>	H x W x D	mm									
	Weight <Panel>		kg									
	Air Volume [Lo-Mid-Hi]		m ³ /min									
	External Static Pressure		Pa									
	Sound Level (SPL) [Lo-Mid-Hi]		dB(A)									
	Sound Level (PWL)		dB(A)									
Outdoor Unit	Dimensions	H x W x D	mm									
	Weight		kg									
	Air Volume		m ³ /min									
			m ³ /min									
	Sound Level (SPL)		dB(A)									
			dB(A)									
	Sound Level (PWL)		dB(A)									
			dB(A)									
	Operating Current (max)		A									
	Breaker Size		A									
Ext. Piping	Diameter	Liquid / Gas	mm									
	Max. Length	Out-In	m									
	Max. Height	Out-In	m									
Guaranteed Operating Range [Outdoor]	Cooling**	°C	°C									
	Heating	°C	°C									

*1 Refrigerant leakage contributes to climate change. Refrigerant with lower global warming potential (GWP) would contribute less to global warming than a refrigerant with higher GWP, if leaked to the atmosphere. This appliance contains a refrigerant fluid with a GWP equal to 550. This means that if 1 kg of this refrigerant fluid would be leaked to the atmosphere, the impact on global warming would be 550 times higher than 1 kg of CO₂, over a period of 100 years. Never try to interfere with the refrigerant circuit yourself or disassemble the product yourself and always ask a professional. The GWP of R32 is 675 in the IPCC 4th Assessment Report.
 *2 Energy consumption based on standard test results. Actual energy consumption will depend on how the appliance is used and where it is located.
 *3 Optional air protection guide is required where ambient temperature is lower than -5°C. *4 EER/COP and SEER/SCOP for M35-71 are measured at ESP 35Pa, for M100 at ESP 37Pa, for M125/140 at ESP 50Pa.
 *5 SEER and SCOP are based on 2009/125/EC: Energy-related Products Directive and Regulation (EU) No206/2012.