

R2 NEXT STAGE LINE

OUTDOOR UNITS - PURY-(E)P Y(S)NW-A1(-BS)



NEW FOUR-SIDED BATTERY

STATIC PRESSURE OF FAN INCREASED UP TO 80 PA.

STATIC PRESSURE OF FAN INCREASED UP TO 80 PA.

CITY MULTI

NEW FAN WITH LOW FRICTION PROFILE

COMPRESSOR OPTIMISED WITH "MULTI-POR" TECHNOLOGY

NEW AUTO-SHIFT MODE

NEW AUTO-SHIFT MODE PREHEAT DEFROST FUNCTION

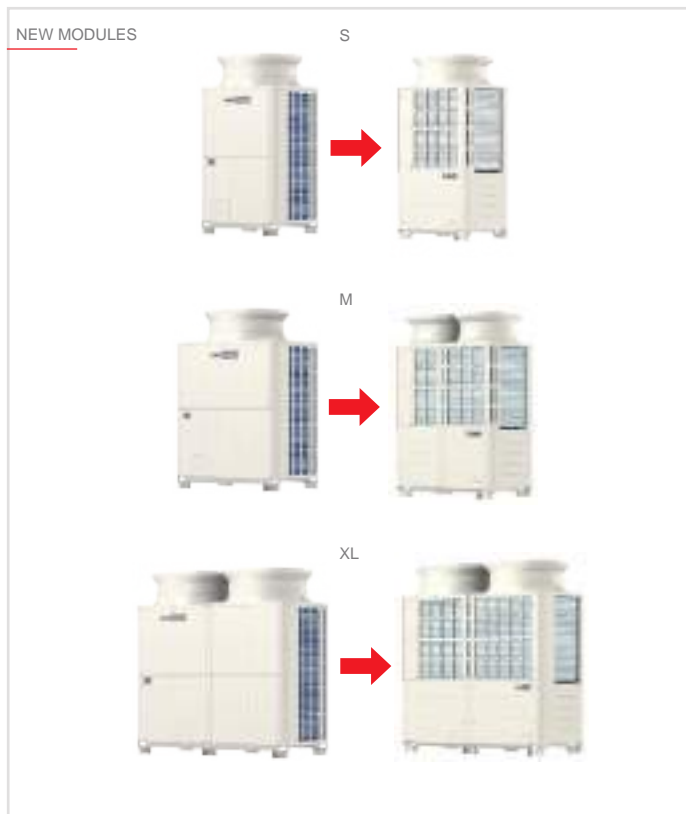
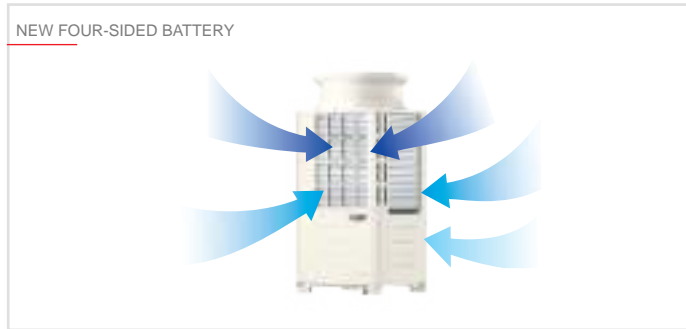
ADVANCED ETC CONTROL OF EVAPORATION TEMPERATURE.

FLEXIBLE NOISE SETTING



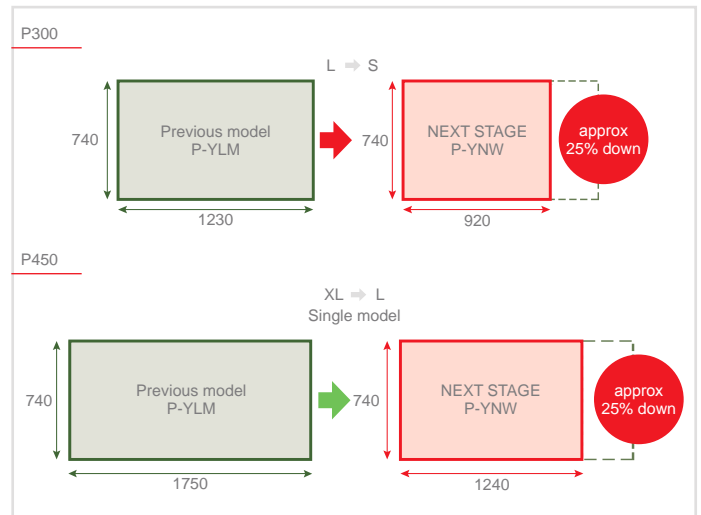
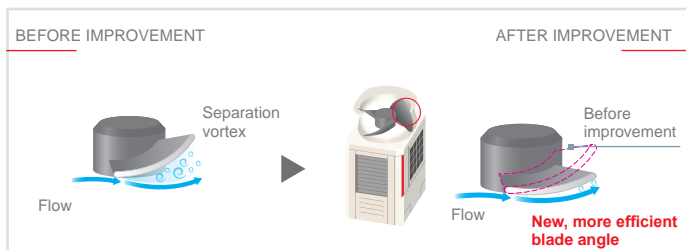
New design

The new outdoor units of the YNW series use a four-sided heat exchanger close to the top of the case near the fan. This technological and construction choice makes it possible to increase heat exchange efficiency.



New fan with new blade profile

The fan of the new YNW series has been completely redesigned to fit with the new four-sided battery. The profile of the fins has been optimised to minimise fluid flow losses.



Energy saving

Energy efficiency has been further improved compared to YLM units and now hits top of the range performance values. SEER values have been raised by 139% (P500) compared to the previous model and SCOP values by 49% (P300 and P500). This allows the new YNW units to consume less energy in both cooling and heating. All year-round saving.

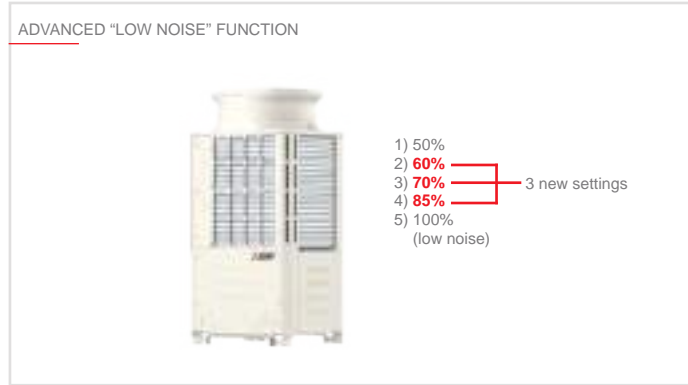


Single module

		Previous model	YNW
8HP	P200	S	S
10HP	P250	S	S
12HP	P300	L	S
14HP	P350	L	L
16HP	P400	L	L
18HP	P450	XL	L
20HP	P500	XL	XL

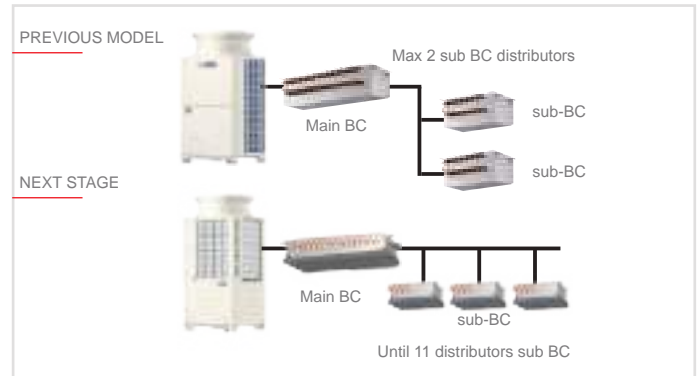
Advanced “Low Noise” function

Low noise” mode can now be selected using five different settings: 85%, 70%, 60% and 50% (values referring to ventilation speed). Noise reduction is directly configurable from the control board of the outdoor unit. Different settings can be selected depending on the installation requirements (in applications with special noise constraints).



New BC distributor

Increased number of connections (for systems with BC SUB distributor) and increased geometric limits. In the R2 heat recovery systems of the new YNW line, up to 11 BC SUB distributors can be connected to the BC Main distributor, thus allowing greater flexibility of configuration. The adoption of the new architecture allows a reduction of the refrigerant charge in the system.



Key Technologies

Technical specifications

MODEL		PURY-P200YNW-A1(-BS)	PURY-P250YNW-A1(-BS)	PURY-P300Y76NW-A1(-BS)	PURY-P350YNW-A1(-BS)	PURY-P400YNW-A1(-BS)	
HP		8	10	12	14	16	
Modules		PURY-P200YNW-A1	PURY-P250YNW-A1	PURY-P300YNW-A1	PURY-P350YNW-A1	PURY-P400YNW-A1	
Power supply	V/Hz/n°	3-fase 380-415V 50Hz					
Cooling	Capacity (nominal) **1	kW	22,4	28,0	33,5	40,0	45,0
	Power input (nominal)	kW	5,27	7,25	8,98	10,98	14,61
	EER		4,25	3,86	3,73	3,64	3,08
	SEER		7,47	6,94	6,62	6,60	6,31
	Temperature operating field	Indoor WB °C	+15~+24	+15~+24	+15~+24	+15~+24	+15~+24
	Outdoor DB °C	-5~+52	-5~+52	-5~+52	-5~+52	-5~+52	
Heating	Capacity (nominal) **2/ Capacity (max) **3	kW	22,4/25,0	28,0/31,5	33,5/37,5	40,0/45,0	45,0/50,0
	Power input (nominal)/ Power input (max)	kW	4,45/5,33	6,22/7,42	8,03/9,54	9,28/11,13	11,65/13,77
	COP/COP max		5,03/4,69	4,50/4,24	4,17/3,93	4,31/4,04	3,86/3,63
	SCOP		3,96	4,05	3,81	3,72	4,10
	Temperature operating field	Indoor WB °C	+15~+27	+15~+27	+15~+27	+15~+27	+15~+27
	Outdoor DB °C	-20~+15,5	-20~+15,5	-20~+15,5	-20~+15,5	-20~+15,5	
Sound level **4	Sound pression (Sound power) level	dB(A)	59/59 (76/78)	60,5/61 (78/80)	61/67 (80/86)	62,5/64 (81/83)	65/69 (83/88)
Connectable indoor units	Total Capacity		50-150%	50-150%	50-150%	50-150%	
	Model/Quantity	CITY MULTI	P10-P250/1-20	P10-P250/1-25	P10-P250/1-30	P10-P250/1-35	P10-P250/1-40
Ø Ref. piping diameter	Liquid	mm	15,88	19,05	19,05	19,05	22,2
	Gas	mm	19,05	22,2	22,2	28,58	28,58
Fan	Type x quantity		Propeller fan x 1	Propeller fan x 1	Propeller fan x 1	Propeller fan x 2	Propeller fan x 2
	Air flow	m³/min	170	185	240	250	315
Compressor	Type		Inverter scroll hermetic				
	Motor output	kW	3,7	5,5	7,3	8,7	11,7
External dimenitions	H(H*5)xWxD	mm	1858(1798)x920x740	1858(1798)x920x740	1858(1798)x920x740	1858(1798)x1240x740	1858(1798)x1240x740
Net weight		kg	214	223	225	269	269
Refrigerant	Ref. Charge R410	kg	5,2	5,2	5,2	8,0	8,0
	CO ₂ eq.**6	Tons	10,85	10,85	10,85	16,70	16,70

12**3 Nominal Conditions:

Cooling conditions: Indoor: 27°C DB / 19°C WB. Outdoor 35°C DB. Piping length 7.5 m, vertical difference 0 m.

Heating conditions: Indoor 20°C DB. Outdoor 7°C DB / 6°C WB. Piping length 7.5 m, vertical difference 0 m.

**2 Eurovent registered

**4 Values measured in anechoic chamber (Cooling mode/Heating mode)

**5 without legs

**6 GWP value of HFC R410A 2088 according to 517 / 2014.

The SEER and SCOP data are based on the EN14825 measurement standard

Technical specifications

MODEL			PURY-P450YNW-A1(-BS)	PURY-P500YNW-A1(-BS)	PURY-P550YNW-A1(-BS)	PURY-P400YSNW-A1(-BS)	PURY-P450YSNW-A1(-BS)	PURY-P500YSNW-A1(-BS)
HP			18	20	22	16	18	20
Modules			PURY-P450YNW-A1	PURY-P500YNW-A1	PURY-P550YNW-A1	PURY-P(200+200)YNW-A1	PURY-P(200+250)YNW-A1	PURY-P(250+250)YNW-A1
Power supply	V/Hz/n°		3-phase 380-415V 50Hz					
Cooling	Capacity (nominal) **1	kW	50,0	56,0	63,0	45,0	50,0	56,0
	Power input (nominal)	kW	14,83	18,54	22,18	10,92	12,72	14,97
	EER		3,37	3,02	2,84	4,12	3,93	3,74
	SEER		6,40	6,32	6,06	7,39	7,09	6,84
	Temperature operating field	Indoor WB °C	+15~+24	+15~+24	+15~+24	+15~+24	+15~+24	+15~+24
	Outdoor DB °C	-5~+52	-5~+52	-5~+52	-5~+52	-5~+52	-5~+52	
Heating	Capacity (nominal) **2/ Capacity (max) **3	kW	50,0/56,0	56,0/63	63,0/69,0	45,0/50,0	50,0/56,0	56,0/63,0
	Power input (nominal)/ Power input (max)	kW	12,46/15,42	14,47/17,50	20,29	9,22/10,98	10,82/12,93	12,81/15,32
	COP/COP max		4,01/3,63	3,87/3,60	3,69	4,88/4,55	4,62/4,33	4,37/4,11
	SCOP		4,03	4,05	4,05	3,84	3,89	3,93
	Temperature operating field	Indoor WB °C	+15~+27	+15~+27	+15~+27	+15~+27	+15~+27	+15~+27
		Outdoor DB °C	-20~+15,5	-20~+15,5	-20~+15,5	-20~+15,5	-20~+15,5	-20~+15,5
	Sound level **4	Sound pression (Sound power) level	dB(A)	65,5/70 (83/89)	63,5/64,5 (82/84)	66,0/70,0	62/62 (79/81)	63/63,5 (81/83)
Connectable indoor units	Total Capacity		50-150%	50-150%	50-150%	50-150%	50-150%	50-150%
	Model/Quantity	CITY MULTI	P10-P250/1-45	P10-P250/1-50	P10-P250/2-50	P10-P250/1-40	P10-P250/1-45	P10-P250/1-50
Ø Ref. piping diameter	Liquid	mm	22,2	22,2	22,2	22,2	22,2	22,2
	Gas	mm	28,58	28,58	28,58	28,58	28,58	28,58
Fan	Type x quantity		Propeller fan x 2	Propeller fan x 2	Propeller fan x 2	Propeller fan x 2	Propeller fan x 2	Propeller fan x 2
	Air flow	m³/min	315	295	410	170+170	170+185	185+185
Compressor	Type		Inverter scroll hermetic					
	Motor output	kW	12,4	14,2	17,4	3,7+3,7	3,7+5,5	5,5+5,5
External dimentions	H(H*)xWxD	mm	1858(1798)x1240x740	1858(1798)x1750x740	1858(1798)x1750x740	1858(1798)x920x740 1858(1798)x920x740	1858(1798)x920x740 1858(1798)x920x740	1858(1798)x920x740 1858(1798)x920x740
Net weight		kg	289	335	335 (739)	214+214	214+223	223+223
Refrigerant	Ref. Charge R410	kg	10,8	10,8	10,8	10,4	10,4	10,4
	CO ₂ eq.**6	Tons	22,55	22,55	22,55	21,71	21,71	21,71

Technical specifications

MODEL			PURY-P550YSNW-A1(-BS)	PURY-P600YSNW-A1(-BS)	PURY-P650YSNW-A1(-BS)	PURY-P700YSNW-A1(-BS)	PURY-P750YSNW-A1(-BS)
HP			22	24	26	28	30
Modules			PURY-P(250+300)YNW-A1	PURY-P(300+300)YNW-A1	PURY-P(300+350)YNW-A1	PURY-P(350+350)YNW-A1	PURY-P(350+400)YNW-A1
Power supply	V/Hz/n°		3-phase 380-415V 50Hz				
Cooling	Capacity (nominal) **1	kW	63,0	69,0	73,0	80,0	85,0
	Power input (nominal)	kW	17,11	19,06	20,44	22,66	26,07
	EER		3,68	3,62	3,57	3,53	3,26
	SEER		6,58	6,38	6,26	6,27	6,25
	Temperature operating field	Indoor WB °C	+15~+24	+15~+24	+15~+24	+15~+24	+15~+24
	Outdoor DB °C	-5~+52	-5~+52	-5~+52	-5~+52	-5~+52	
Heating	Capacity (nominal) **2/ Capacity (max) **3	kW	63,0/69,0	69,0/76,5	73,0/81,5	80,0/88,0	85,0/95,0
	Power input (nominal)/ Power input (max)	kW	15,0/17,42	17,07/20,07	17,76/21,05	19,13/22,44	21,46/25,53
	COP/COP max		4,20/3,96	4,04/3,81	4,11/3,87	4,18/3,92	3,96/3,72
	SCOP		3,81	3,69	3,65	3,61	3,61
	Temperature operating field	Indoor WB °C	+15~+27	+15~+27	+15~+27	+15~+27	+15~+27
		Outdoor DB °C	-20~+15,5	-20~+15,5	-20~+15,5	-20~+15,5	-20~+15,5
	Sound level **4	Sound pression (Sound power) level	dB(A)	64/68 (83/87)	64/70 (83/89)	65/69 (84/88)	65,5/67 (84/86)
Connectable indoor units	Total Capacity		50-150%	50-150%	50-150%	50-150%	50-150%
	Model/Quantity	CITY MULTI	P10-P250/2-50	P10-P250/2-50	P10-P250/2-50	P10-P250/2-50	P10-P250/2-50
Ø Ref. piping diameter	Liquid	mm	22,2	22,2	28,58	28,58	28,58
	Gas	mm	28,58	28,58	28,58	34,93	34,93
Fan	Type x quantity		Propeller fan x 2	Propeller fan x 2	Propeller fan x 3	Propeller fan x 4	Propeller fan x 4
	Air flow	m³/min	185+240	240+240	240+250	250+250	250+315
Compressor	Type		Inverter scroll hermetic				
	Motor output	kW	5,5+7,3	7,3+7,3	7,3+8,7	8,7+8,7	8,7+11,7
External dimentions	H(H*)xWxD	mm	1858(1798)x920x740 1858(1798)x920x740	1858(1798)x920x740 1858(1798)x920x740	1858(1798)x920x740 1858(1798)x1240x740	1858(1798)x1240x740 1858(1798)x1240x740	1858(1798)x1240x740 1858(1798)x1240x740
Net weight		kg	223+225	225+225	225+269	269+269	269+269
Refrigerant	Ref. Charge R410	kg	10,4	10,4	13,2	16	16
	CO ₂ eq.**6	Tons	21,71	21,71	27,56	33,40	33,40

12**3 Nominal Conditions:

Cooling conditions: Indoor: 27°C DB / 19°C WB. Outdoor 35°C DB. Piping length 7.5 m, vertical difference 0 m.

Heating conditions: Indoor 20°C DB. Outdoor 7°C DB / 6°C WB. Piping length 7.5 m, vertical difference 0 m.

**2 Eurovent registered

**4 Values measured in anechoic chamber (Cooling mode/Heating mode)

**5 without legs

**6 GWP value of HFC R410A 2088 according to 517 / 2014.

The SEER and SCOP data are based on the EN14825 measurement standard

Technical specifications

MODEL			PURY-P800YSNW-A1(-BS)	PURY-P850YSNW-A1(-BS)	PURY-P900YSNW-A1(-BS)	PURY-P950YSNW-A1(-BS)	PURY-P1000YSNW-A1(-BS)
HP			32	34	36	38	40
Modules			PURY-P(400+400)YNW-A1	PURY-P(400+450)YNW-A1	PURY-P(450+450)YNW-A1	PURY-P(450+500)YNW-A1	PURY-P(500+500)YNW-A1
Power supply	V/Hz/n°		3-fase 380-415V 50Hz				
Cooling	Capacity (nominal) **	kW	90,0	96,0	101,0	108,0	113,0
	Power input (nominal)	kW	30,10	30,67	30,88	34,83	38,56
	EER		2,99	3,13	3,27	3,10	2,93
	SEER		6,22	6,30	6,33	6,22	6,05
	Temperature operating field	Indoor WB °C	+15--+24	+15--+24	+15--+24	+15--+24	+15--+24
	Outdoor DB °C	-5--+52	-5--+52	-5--+52	-5--+52	-5--+52	
Heating	Capacity (nominal) **/ Capacity (max) **3	kW	90,0/100,0	96,0/108,0	101,0/113	108,0/119,5	113,0/127,0
	Power input (nominal)/ Power input (max)	kW	24,06/28,40	25,13/30,68	25,96/32,10	28,27/34,04	30,13/36,38
	COP/COP max		3,74/3,52	3,82/3,52	3,89/3,52	3,82/3,51	3,75/3,49
	SCOP		3,97	3,93	3,90	3,92	3,92
	Temperature operating field	Indoor WB °C	+15--+27	+15--+27	+15--+27	+15--+27	+15--+27
	Outdoor DB °C	-20--+15,5	-20--+15,5	-20--+15,5	-20--+15,5	-20--+15,5	
Sound level **4	Sound pression (Sound power) level	dB(A)	68/72 (86/91)	68,5/72,5 (86/92)	68,5/73,0 (86/92)	68/71,5 (86/91)	66,5/67,5 (85/87)
Connectable indoor units	Total Capacity		50-150%	50-150%	50-150%	50-150%	50-150%
	Model/Quantity	CITY MULTI	P10-P250/2-50	P10-P250/2-50	P10-P250/2-50	P10-P250/2-50	P10-P250/2-50
Ø Ref. piping diameter	Liquid	mm	28,58	28,58	28,58	28,58	28,58
	Gas	mm	34,93	41,28	41,28	41,28	41,28
Fan	Type x quantity		Propeller fan x 4	Propeller fan x 4	Propeller fan x 4	Propeller fan x 4	Propeller fan x 4
	Air flow	m³/min	315+315	315+315	315+315	315+295	295+295
Compressor	Type		Inverter scroll hermetic				
	Motor output	kW	11,7+11,7	11,7+12,4	12,4+12,4	12,4+14,2	14,2+14,2
External dimentions	H(H**5)xWxD	mm	1858(1798)x1240x740 1858(1798)x1240x740	1858(1798)x1240x740 1858(1798)x1240x740	1858(1798)x1240x740 1858(1798)x1240x740	1858(1798)x1240x740 1858(1798)x1750x740	1858(1798)x1750x740 1858(1798)x1750x740
Net weight		kg	269+269	269+289	289+289	289+335	335+335
Refrigerant	Ref. Charge R410	kg	16	18,8	21,6	21,6	21,6
	CO ₂ eq.**6	Tons	33,40	39,25	45,1	45,1	45,1

Technical specifications

MODEL			PURY-P1050YSNW-A1(-BS)	PURY-P1100YSNW-A1(-BS)
HP			42	44
Modules			PURY-P(500+550)YNW-A1	PURY-P(550+550)YNW-A1
Power supply	V/Hz/n°		3-fase 380-415V 50Hz	
Cooling	Capacity (nominal) **	kW	118,0	124,0
	Power input (nominal)	kW	41,54	45,09
	EER		2,84	2,75
	SEER		5,90	5,77
	Temperature operating field	Indoor WB °C	+15--+24	+15--+24
	Outdoor DB °C	-5--+52	-5--+52	
Heating	Capacity (nominal) **/ Capacity (max) **3	kW	118,0/132,0	124,0/140,0
	Power input (nominal)/ Power input (max)	kW	32,15/38,82	34,63/42,42
	COP/COP max		3,67/3,40	3,58/3,30
	SCOP		3,92	3,92
	Temperature operating field	Indoor WB °C	+15--+27	+15--+27
	Outdoor DB °C	-20--+15,5	-20--+15,5	
Sound level **4	Sound pression (Sound power) level	dB(A)	68/73 (86/91)	69/73 (86/92)
Connectable indoor units	Total Capacity		50-150%	50-150%
	Model/Quantity	CITY MULTI	P10-P250/3-50	P10-P250/3-50
Ø Ref. piping diameter	Liquid	mm	34,93	34,93
	Gas	mm	41,28	41,28
Fan	Type x quantity		Propeller fan x 4	Propeller fan x 4
	Air flow	m³/min	295+410	410+410
Compressor	Type		Inverter scroll hermetic	
	Motor output	kW	14,2+17,4	17,4+17,4
External dimentions	H(H**5)xWxD	mm	1858(1798)x1750x740 1858(1798)x1750x740	1858(1798)x1750x740 1858(1798)x1750x740
Net weight		kg	335+335	335+335
Refrigerant	Ref. Charge R410	kg	21,6	21,6
	CO ₂ eq.**6	Tons	45,1	45,1

12**3 Nominal Conditions:

Cooling conditions: Indoor: 27°C DB / 19°C WB, Outdoor 35°C DB, Piping length 7.5 m, vertical difference 0 m.

Heating conditions: Indoor 20°C DB, Outdoor 7°C DB / 6°C WB, Piping length 7.5 m, vertical difference 0 m.

**2 Eurovent registered

**4 Values measured in anechoic chamber (Cooling mode/Heating mode)

**5 without legs

**6 GWP value of HFC R410A 2088 according to 517 / 2014.

The SEER and SCOP data are based on the EN14825 measurement standard

Technical specifications

MODEL			PURY-EP200YNW-A1(-BS)	PURY-EP250YNW-A1(-BS)	PURY-EP300YNW-A1(-BS)	PURY-EP350YNW-A1(-BS)	PURY-EP400YNW-A1(-BS)
HP			8	10	12	14	16
Modules			PURY-EP200YNW-A1	PURY-EP250YNW-A1	PURY-EP300YNW-A1	PURY-EP350YNW-A1	PURY-EP400YNW-A1
Power supply	V/Hz/n°		3-phase 4-wire 380-400-415 V 50/60 Hz				
Cooling	Capacity (nominal) **	kW	22.4	28.0	33.5	40.0	45.0
	Power input (nominal)	kW	4.74	6.89	8.17	9.97	13.04
	EER		4.72	4.06	4.10	4.01	3.45
	SEER		7.66	7.23	6.77	6.66	6.63
	Temperature operating field	Indoor WB °C	+15~+24	+15~+24	+15~+24	+15~+24	+15~+24
	Outdoor DB °C	-5~+52	-5~+52	-5~+52	-5~+52	-5~+52	
Heating	Capacity (nominal) **/ Capacity (max) **	kW	22.4 / 25.0	28.0 / 31.5	33.5 / 37.5	40.0 / 45.0	45.0 / 50.0
	Power input (nominal)/ Power input (max)	kW	4.40 / 5.25	6.18 / 7.37	8.01 / 9.51	9.23 / 11.08	11.42 / 13.58
	COP/COP max		5.09 / 4.76	4.53 / 4.27	4.18 / 3.94	4.33 / 4.06	3.94 / 3.68
	SCOP		4.00	4.24	4.12	4.12	4.12
	Temperature operating field	Indoor WB °C	+15~+27	+15~+27	+15~+27	+15~+27	+15~+27
	Outdoor DB °C	-20~+15,5	-20~+15,5	-20~+15,5	-20~+15,5	-20~+15,5	
Sound level **	Sound pressure (Sound power) level	dB(A)	59.0/59.0 (76/78)	60.5/61.0 (78/80)	61.0/67.0 (80/86)	62.5/64.0 (81/83)	65.0/69.0 (83/88)
Connectable indoor units	Total Capacity		50-150%	50-150%	50-150%	50-150%	50-150%
	Model/Quantity	CITY MULTI	P10-P250/1-20	P10-P250/1-25	P10-P250/1-30	P10-P250/1-35	P10-P250/1-40
Ø Ref. piping diameter	Liquid	mm	15.88	19.05	19.05	19.05	22.2
	Gas	mm	19.05	22.2	22.2	28.58	28.58
Fan	Type x quantity		Propeller fan x 1	Propeller fan x 1	Propeller fan x 1	Propeller fan x 2	Propeller fan x 2
	Air flow	m³/min	170	185	240	250	315
Compressor	Type		Inverter scroll hermetic				
	Motor output	kW	3.6	5.5	7.3	8.7	10.8
External dimensions	H(H*)xWxD	mm	1858(1798)x920x740	1858(1798)x920x740	1858(1798)x920x740	1858(1798)x1240x740	1858(1798)x1240x740
Net weight		kg	219	228	230	275	276
Refrigerant	Ref. Charge R410	kg	5,2	5,2	5,2	8	8
	CO ₂ eq.**	Tons	10,85	10,85	10,85	16,70	16,70

Technical specifications

MODEL			PURY-EP450YNW-A1(-BS)	PURY-EP500YNW-A1(-BS)	PURY-EP550YNW-A1(-BS)	PURY-EP400YSNW-A1(-BS)	PURY-EP450YSNW-A1(-BS)
HP			18	20	22	16	18
Modules			PURY-EP450YNW-A1	PURY-EP500YNW-A1	PURY-EP550YNW-A1	PURY-EP(200+200)YNW-A1	PURY-EP(200+250)YNW-A1
Power supply	V/Hz/n°		3-phase 4-wire 380-400-415 V 50/60 Hz				
Cooling	Capacity (nominal) **	kW	50.0	56.0	63.0	45.0	50.0
	Power input (nominal)	kW	13.85	18.12	22.00	9.82	11.73
	EER		3.61	3.09	2.86	4.58	4.26
	SEER		6.61	6.47	6.21	7.60	7.32
	Temperature operating field	Indoor WB °C	+15~+24	+15~+24	+15~+24	+15~+24	+15~+24
	Outdoor DB °C	-5~+52	-5~+52	-5~+52	-5~+52	-5~+52	
Heating	Capacity (nominal) **/ Capacity (max) **	kW	50.0 / 56.0	56.0 / 63.0	63.0 / 69.0	45.0 / 50.0	50.0 / 56.0
	Power input (nominal)/ Power input (max)	kW	12.16 / 14.62	14.35 / 17.35	16.55 / 19.71	9.10 / 10.82	10.70 / 12.78
	COP/COP max		4.11 / 3.83	3.90 / 3.63	3.80 / 3.50	4.94 / 4.62	4.67 / 4.38
	SCOP		4.10	4.09	4.09	3.88	4.01
	Temperature operating field	Indoor WB °C	+15~+27	+15~+27	+15~+27	+15~+27	+15~+27
	Outdoor DB °C	-20~+15,5	-20~+15,5	-20~+15,5	-20~+15,5	-20~+15,5	
Sound level **	Sound pressure (Sound power) level	dB(A)	65.5/70.0 (83/89)	63.5/64.5 (82/84)	66.0/70.0 (83/89)	62.0/62.0 (79/81)	63.0/63.5 (81/83)
Connectable indoor units	Total Capacity		50-150%	50-150%	50-150%	50-150%	50-150%
	Model/Quantity	CITY MULTI	P10-P250/1-45	P10-P250/1-50	P10-P250/2-50	P10-P250/1-40	P10-P250/1-45
Ø Ref. piping diameter	Liquid	mm	22.2	22.2	22.2	22.2	22.2
	Gas	mm	28.58	28.58	28.58	28.58	28.58
Fan	Type x quantity		Propeller fan x 2	Propeller fan x 2	Propeller fan x 2	Propeller fan x 2	Propeller fan x 2
	Air flow	m³/min	315	295	410	170 + 170	170 + 185
Compressor	Type		Inverter scroll hermetic				
	Motor output	kW	11.7	13.8	17.2	3.6 + 3.6	3.6 + 5.5
External dimensions	H(H*)xWxD	mm	1858(1798)x1240x740	1858(1798)x1750x740	1858(1798)x1750x740	1858(1798)x920x740 1858(1798)x920x740	1858(1798)x920x740 1858(1798)x920x740
Net weight		kg	301	346	346	219 + 219	219 + 228
Refrigerant	Ref. Charge R410	kg	10,8	10,8	10,8	10,4	10,4
	CO ₂ eq.**	Tons	22,55	22,55	22,55	21,71	21,71

**2*3 Nominal Conditions:

Cooling conditions: Indoor: 27°C DB / 19°C WB. Outdoor 35°C DB. Piping length 7.5 m, vertical difference 0 m.

Heating conditions: Indoor 20°C DB. Outdoor 7°C DB / 6°C WB. Piping length 7.5 m, vertical difference 0 m.

** Eurovent registered

** Values measured in anechoic chamber (Cooling mode/Heating mode)

** without legs

** GWP value of HFC R410A 2088 according to 517 / 2014.

The SEER and SCOP data are based on the EN14825 measurement standard

Technical specifications

MODEL			PURY-EP500YSNW-A1(-BS)	PURY-EP550YSNW-A1(-BS)	PURY-EP600YSNW-A1(-BS)	PURY-EP650YSNW-A1(-BS)	PURY-EP700YSNW-A1(-BS)
HP			20	22	24	26	28
Modules			PURY-EP(250+250)YNW-A1	PURY-EP(250+300)YNW-A1	PURY-EP(300+300)YNW-A1	PURY-EP(300+350)YNW-A1	PURY-EP(350+350)YNW-A1
Power supply	V/Hz/n°		3-phase 4-wire 380-400-415 V 50/60 Hz				
Cooling	Capacity (nominal) **	kW	56.0	63.0	69.0	73.0	80.0
	Power input (nominal)	kW	14.21	15.90	17.33	18.57	20.56
	EER		3.94	3.96	3.98	3.93	3.89
	SEER		7.12	6.85	6.61	6.50	6.52
	Temperature operating field	Indoor WB °C	+15~+24	+15~+24	+15~+24	+15~+24	+15~+24
	Outdoor DB °C	-5~+52	-5~+52	-5~+52	-5~+52	-5~+52	
Heating	Capacity (nominal) **/ Capacity (max) **	kW	56.0 / 63.0	63.0 / 69.0	69.0 / 76.5	73.0 / 81.5	80.0 / 88.0
	Power input (nominal)/ Power input (max)	kW	12.75 / 15.21	14.92 / 17.33	17.03 / 20.02	17.67 / 21.00	19.04 / 22.33
	COP/COP max		4.39 / 4.14	4.22 / 3.98	4.05 / 3.82	4.13 / 3.88	4.20 / 3.94
	SCOP		4.11	4.05	3.99	3.99	3.99
	Temperature operating field	Indoor WB °C	+15~+27	+15~+27	+15~+27	+15~+27	+15~+27
	Outdoor DB °C	-20~+15,5	-20~+15,5	-20~+15,5	-20~+15,5	-20~+15,5	
Sound level **	Sound pression (Sound power) level	dB(A)	63.5/64.0 (81/83)	64.0/68.0 (83/87)	64.0/70.0 (83/89)	65.0/69.0 (84/88)	65.5/67.0 (84/86)
Connectable indoor units	Total Capacity		50-150%	50-150%	50-150%	50-150%	50-150%
	Model/Quantity	CITY MULTI	P10-P250/1-50	P10-P250/2-50	P10-P250/2-50	P10-P250/2-50	P10-P250/2-50
Ø Ref. piping diameter	Liquid	mm	22.2	22.2	22.2	28.58	28.58
	Gas	mm	28.58	28.58	28.58	28.58	34.93
Fan	Type x quantity		Propeller fan x 2	Propeller fan x 2	Propeller fan x 2	Propeller fan x 3	Propeller fan x 4
	Air flow	m³/min	185 + 185	185 + 240	240 + 240	240 + 250	250 + 250
Compressor	Type		Inverter scroll hermetic				
	Motor output	kW	5.5 + 5.5	5.5 + 7.3	7.3 + 7.3	7.3 + 8.7	8.7 + 8.7
External dimenstions	H(H*)xWxD	mm	1858(1798)x920x740 1858(1798)x920x740	1858(1798)x920x740 1858(1798)x920x740	1858(1798)x920x740 1858(1798)x920x740	1858(1798)x920x740 1858(1798)x1240x740	1858(1798)x1240x740 1858(1798)x1240x740
Net weight		kg	228 + 228	228 + 230	230 + 230	230 + 275	275 + 275
Refrigerant	Ref. Charge R410	kg	10,4	10,4	10,4	13,2	16
	CO ₂ eq.**6	Tons	21,71	21,71	21,71	27,56	33,40

Technical specifications

MODEL			PURY-EP750YSNW-A1(-BS)	PURY-EP800YSNW-A1(-BS)	PURY-EP850YSNW-A1(-BS)	PURY-EP900YSNW-A1(-BS)	PURY-EP950YSNW-A1(-BS)
HP			30	32	34	36	38
Modules			PURY-EP(350+400)YNW-A1	PURY-EP(400+400)YNW-A1	PURY-EP(400+450)YNW-A1	PURY-EP(450+450)YNW-A1	PURY-EP(450+500)YNW-A1
Power supply	V/Hz/n°		3-phase 4-wire 380-400-415 V 50/60 Hz				
Cooling	Capacity (nominal) **	kW	85.0	90.0	96.0	101.0	108.0
	Power input (nominal)	kW	23.48	26.86	28.07	28.85	33.23
	EER		3.62	3.35	3.42	3.50	3.25
	SEER		6.49	6.44	6.52	6.56	6.46
	Temperature operating field	Indoor WB °C	+15~+24	+15~+24	+15~+24	+15~+24	+15~+24
	Outdoor DB °C	-5~+52	-5~+52	-5~+52	-5~+52	-5~+52	
Heating	Capacity (nominal) **/ Capacity (max) **	kW	85.0 / 95.0	90.0 / 100.0	96.0 / 108.0	101.0 / 113.0	108.0 / 119.5
	Power input (nominal)/ Power input (max)	kW	21.19 / 25.33	23.56 / 28.01	24.61 / 29.67	25.31 / 30.37	27.83 / 33.01
	COP/COP max		4.01 / 3.75	3.82 / 3.57	3.90 / 3.64	3.99 / 3.72	3.88 / 3.62
	SCOP		3.99	3.99	3.98	3.97	3.97
	Temperature operating field	Indoor WB °C	+15~+27	+15~+27	+15~+27	+15~+27	+15~+27
	Outdoor DB °C	-20~+15,5	-20~+15,5	-20~+15,5	-20~+15,5	-20~+15,5	
Sound level **	Sound pression (Sound power) level	dB(A)	67.0/70.5 (86/90)	68.0/72.0 (86/91)	68.5/72.5 (86/92)	68.5/73.0 (86/92)	68.0/71.5 (86/91)
Connectable indoor units	Total Capacity		50-150%	50-150%	50-150%	50-150%	50-150%
	Model/Quantity	CITY MULTI	P10-P250/2-50	P10-P250/2-50	P10-P250/2-50	P10-P250/2-50	P10-P250/2-50
Ø Ref. piping diameter	Liquid	mm	28.58	28.58	28.58	28.58	28.58
	Gas	mm	34.93	34.93	41.28	41.28	41.28
Fan	Type x quantity		Propeller fan x 4	Propeller fan x 4	Propeller fan x 4	Propeller fan x 4	Propeller fan x 4
	Air flow	m³/min	250 + 315	315 + 315	315 + 315	315 + 315	315 + 295
Compressor	Type		Inverter scroll hermetic				
	Motor output	kW	8.7 + 10.8	10.8 + 10.8	10.8 + 11.7	11.7 + 11.7	11.7 + 13.8
External dimenstions	H(H*)xWxD	mm	1858(1798)x1240x740 1858(1798)x1240x740	1858(1798)x1240x740 1858(1798)x1240x740	1858(1798)x1240x740 1858(1798)x1240x740	1858(1798)x1240x740 1858(1798)x1240x740	1858(1798)x1240x740 1858(1798)x1240x740
Net weight		kg	275 + 276	276 + 276	276 + 301	301 + 301	301 + 346
Refrigerant	Ref. Charge R410	kg	16	18	18,8	21,6	21,6
	CO ₂ eq.**6	Tons	33,40	37,58	39,25	45,1	45,1

**2*3 Nominal Conditions:

Cooling conditions: Indoor: 27°C DB / 19°C WB. Outdoor 35°C DB. Piping length 7.5 m, vertical difference 0 m.

Heating conditions: Indoor 20°C DB. Outdoor 7°C DB / 6°C WB. Piping length 7.5 m, vertical difference 0 m.

** Eurovent registered

** Values measured in anechoic chamber (Cooling mode/Heating mode)

** without legs

** GWP value of HFC R410A 2088 according to 517 / 2014.

The SEER and SCOP data are based on the EN14825 measurement standard

Technical specifications

MODEL			PURY-EP1000YSNW-A1(-BS)	PURY-EP1050YSNW-A1(-BS)	PURY-EP1100YSNW-A1(-BS)
HP			40	42	44
Modules			PURY-EP(500+500)YNW-A1	PURY-EP(500+550)YNW-A1	PURY-EP(550+550)YNW-A1
Power supply	V/Hz/n°		3-phase 4-wire 380-400-415 V 50/60 Hz		
Cooling	Capacity (nominal) ^{*1}	kW	113.0	118.0	124.0
	Power input (nominal)	kW	37.66	40.83	44.76
	EER		3.00	2.89	2.77
	SEER		6.34	6.19	6.06
	Temperature operating field	Indoor WB °C	+15~+24	+15~+24	+15~+24
	Outdoor DB °C	-5~+52	-5~+52	-5~+52	
Heating	Capacity (nominal) ^{*2} / Capacity (max) ^{*3}	kW	113.0 / 127.0	118.0 / 132.0	124.0 / 140.0
	Power input (nominal)/ Power input (max)	kW	29.89 / 36.07	31.63 / 38.15	33.60 / 41.17
	COP/COP max		3.78 / 3.52	3.73 / 3.46	3.69 / 3.40
	SCOP		3.96	3.96	3.96
	Temperature operating field	Indoor WB °C	+15~+27	+15~+27	+15~+27
	Outdoor DB °C	-20~+15,5	-20~+15,5	-20~+15,5	
Sound level ^{*4}	Sound pression (Sound power) level	dB(A)	66.5/67.5 (85/87)	68.0/73.0 (86/91)	69.0/73.0 (86/92)
Connectable indoor units	Total Capacity		50-150%	50-150%	50-150%
	Model/Quantity	CITY MULTI	P10-P250/2-50	P10-P250/2-50	P10-P250/2-50
Ø Ref. piping diameter	Liquid	mm	28.58	34.93	34.93
	Gas	mm	41.28	41.28	41.28
Fan	Type x quantity		Propeller fan x 4	Propeller fan x 4	Propeller fan x 4
	Air flow	m ³ /min	295 + 295	295 + 410	410 + 410
Compressor	Type		Inverter scroll hermetic		
	Motor output	kW	13.8 + 13.8	13.8 + 17.2	17.2 + 17.2
External dimentions	H(H*5)xWxD	mm	1858(1798)x1750x740 1858(1798)x1750x740	1858(1798)x1750x740 1858(1798)x1750x740	1858(1798)x1750x740 1858(1798)x1750x740
	Net weight	kg	346 + 346	346 + 346	346 + 346
Refrigerant	Ref. Charge R410	kg	21,6	21,6	21,6
	CO ₂ eq. ^{*6}	Tons	45,1	45,1	45,1

^{*1}^{*2}^{*3} Nominal Conditions:

Cooling conditions: Indoor: 27°C DB / 19°C WB. Outdoor 35°C DB. Piping length 7.5 m, vertical difference 0 m.

Heating conditions: Indoor 20°C DB. Outdoor 7°C DB / 6°C WB. Piping length 7.5 m, vertical difference 0 m.

^{*2} Eurovent registered

^{*4} Values measured in anechoic chamber (Cooling mode/Heating mode)

^{*5} without legs

^{*6} GWP value of HFC R410A 2088 according to 517 / 2014.

The SEER and SCOP data are based on the EN14825 measurement standard