

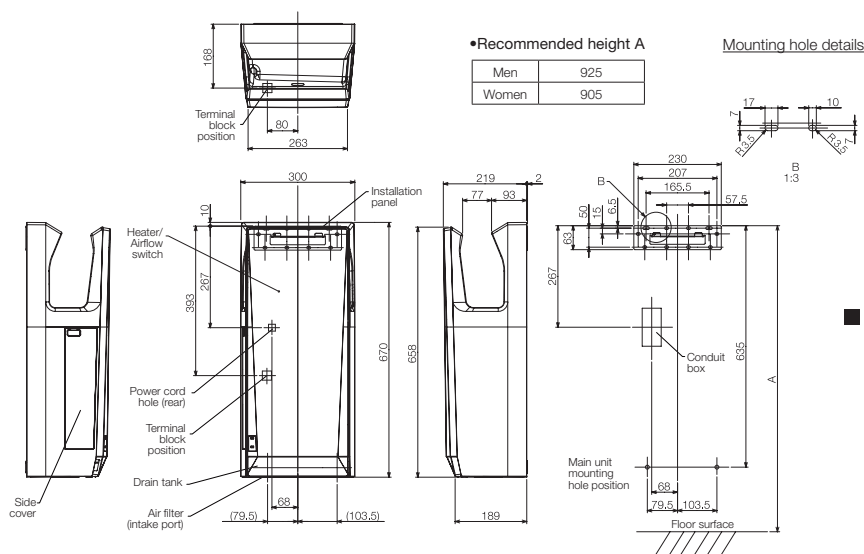
Specifications

	Power supply	Mode	Heater	Drying time* ¹ (sec)	Power consumption(W)	Noise* ² (dB)	Motor type	Hygienic features	External dimensions (mm)	Weight (kg)	Drain tank (L)
Jet Towel Slim JT-SB216JSH2	220-240V 50-60Hz	High	ON	9-11	1240	59	Brushless DC	- Antibacterial surfaces - NSF certification - Alcohol-cleanable	Width: 300 Depth: 219 Height: 670	11	0.8
			OFF	11-13	720						
		Standard	ON	11-13	1070	56					
			OFF	13-15	550						
Jet Towel Slim JT-SB216KSN2		High	—	11-13	720	59					
				Standard	13-15	550					

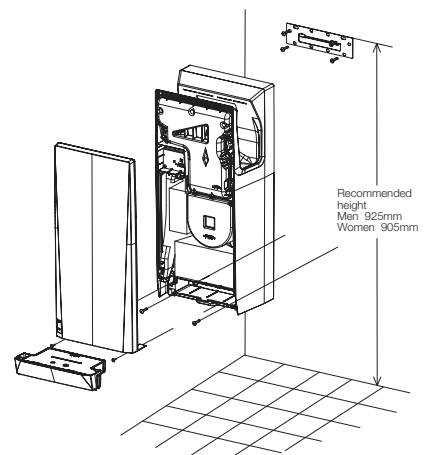
*1 Time needed to reduce remaining water to 50mg or less per hand (in-house study).

*2 Measurements made in anechoic chamber at a distance of 2m.

■ Dimensions



■ Mounting Diagram



- For fastening main unit mounting screws, use a Phillips(+) screwdriver with a shaft length of at least 150mm.
- Mount the unit so that the left-side cover is removable and the rating label is visible. (At least 150mm, but 200mm or more is recommended. Embedded portion is excluded.) Allow 200mm or more to enable the water drainage duct to be checked after cleaning.
- Allow at least 130mm between the bottom surface (air-intake port) of the unit and the floor surface.

(Unit: mm)